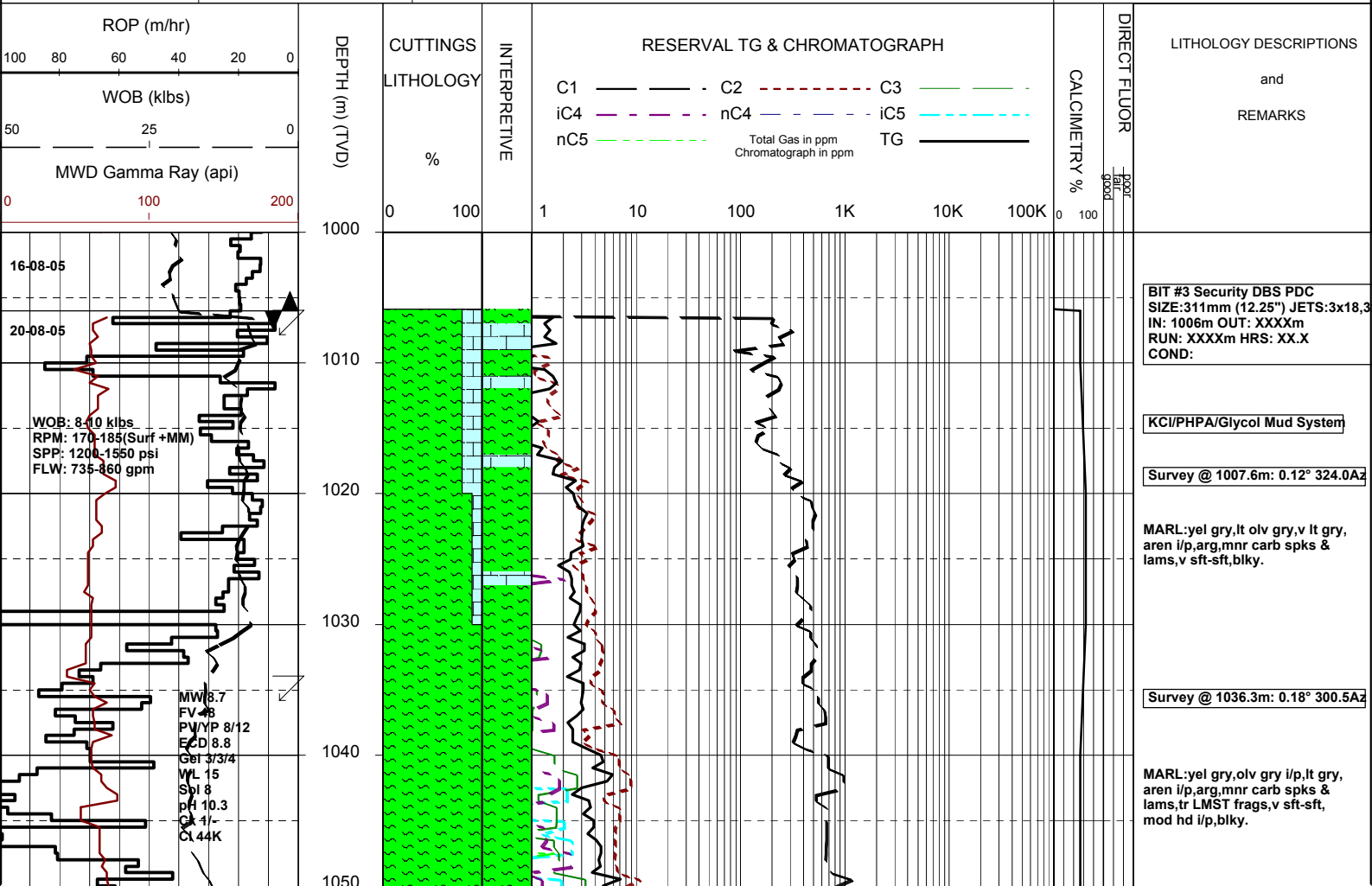
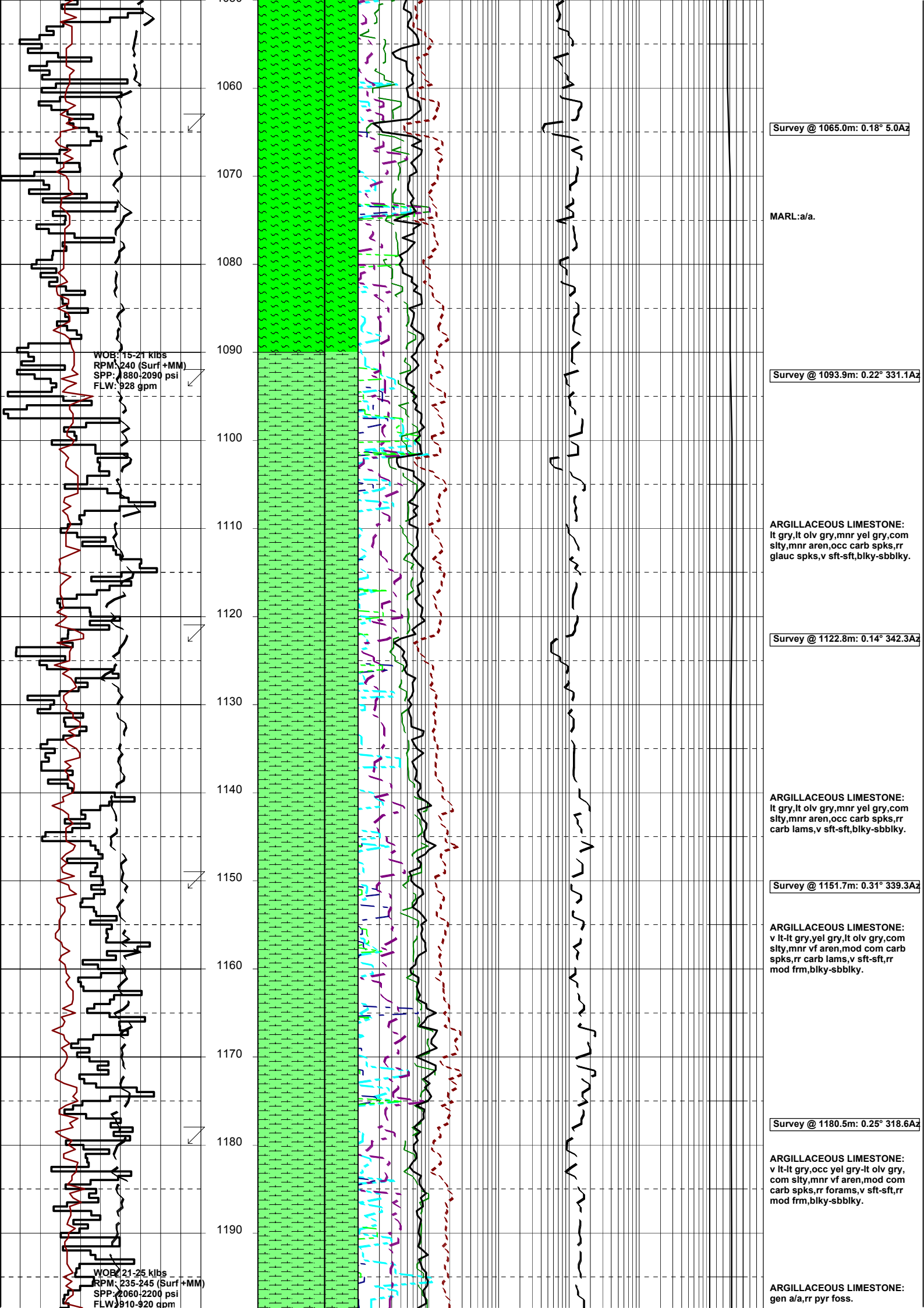


MASTERLOG BASKER 2

GENERAL	POSITION	HOLE / CASING INFO	DATE / DEPTH	ENGINEERS
Country : AUSTRALIA	Latitude : 38°17'58.51"S	17 1/2" Hole to (mMDRT): 1006	Spud Date : 14-08-2005	D. ADDERLEY
Permit : VIC RL6	Longitude : 148°42'24.72"E	12 1/4" Hole to (mMDRT) :	Total Depth Date :	A. DUNN
Field : BASKER	UTM Co-ord X (m E): 649251.9	8 1/2" Hole to (mMDRT) :	Total Depth (mMDRT):	S. RAJA
Basin : GIPPSLAND	UTM Co-ord Y (m N): 5759566	30" Conductor @ (mMDRT) : 208	True Vertical Depth (mTVDSS):	
Well Type : APPRAISAL	RT to MSL (m): 21.5	13 3/8" Shoe @ (mMDRT) : 1000	Log Scale : 1/ 500	
Rig Name : Ocean Patriot	RT to Sea Bed (m): 174	9 5/8" Shoe @ (mMDRT) :	Final Status :	

ABBREVIATIONS		LITHOLOGY LEGEND				ENGINEERING LEGEND	
MW Mud Weight	WOB Weight on Bit (klbs)	Marl	Quartzite	Siltstone	Rudists	Essai non concl	Mud loss
FV Funnel Viscosity	RPM Rotations Per Min	Clay, Sand Lime	ar. Sandstone	f to vf Sand f	Sponges	Aucun fluide re	
PV Plastic Viscosity	FLW Flow Rate (gpm)	do. Shale	bitum. Shale (b)	Fossils	Sporomorphs	TEST Test	RFT
YP Yield Point	SPP Pump Pressure (psi)	ca. Shale	Claystone	Algae	Tigillites	Filtrat	FIT
Gel Gel Strength	RR Re-Run Bit	sandy Shale	Fine SST	Lithic Fragment	Vertebrates	Deviation curve	DST
WL Water Loss	TG Trip Gas	si. Claystone	sa. Shale	Belemnits	Wood silicified	Mud gain	Cement
KCI Potassium Chloride	CG Connection Gas					Boue	
Cl Chlorides	BG Background Gas						
Incl Inclination	DGP Drilled Gas Peak						
Az Azimuth	MM Mud Motor						





Survey @ 1065.0m: 0.18° 5.0Az

MARL:a/a.

Survey @ 1093.9m: 0.22° 331.1Az

ARGILLACEOUS LIMESTONE:
lt gry,lt olv gry,mnr yel gry,com slty,mnr aren,occ carb spks,rr glauc spks,v sft-sft,blky-sbbiky.

Survey @ 1122.8m: 0.14° 342.3Az

ARGILLACEOUS LIMESTONE:
lt gry,lt olv gry,mnr yel gry,com slty,mnr aren,occ carb spks,rr carb lams,v sft-sft,blky-sbbiky.

Survey @ 1151.7m: 0.31° 339.3Az

ARGILLACEOUS LIMESTONE:
v lt-lt gry,yel gry,lt olv gry,com slty,mnr vf aren,mod com carb spks,rr carb lams,v sft-sft,rr mod frm,blky-sbbiky.

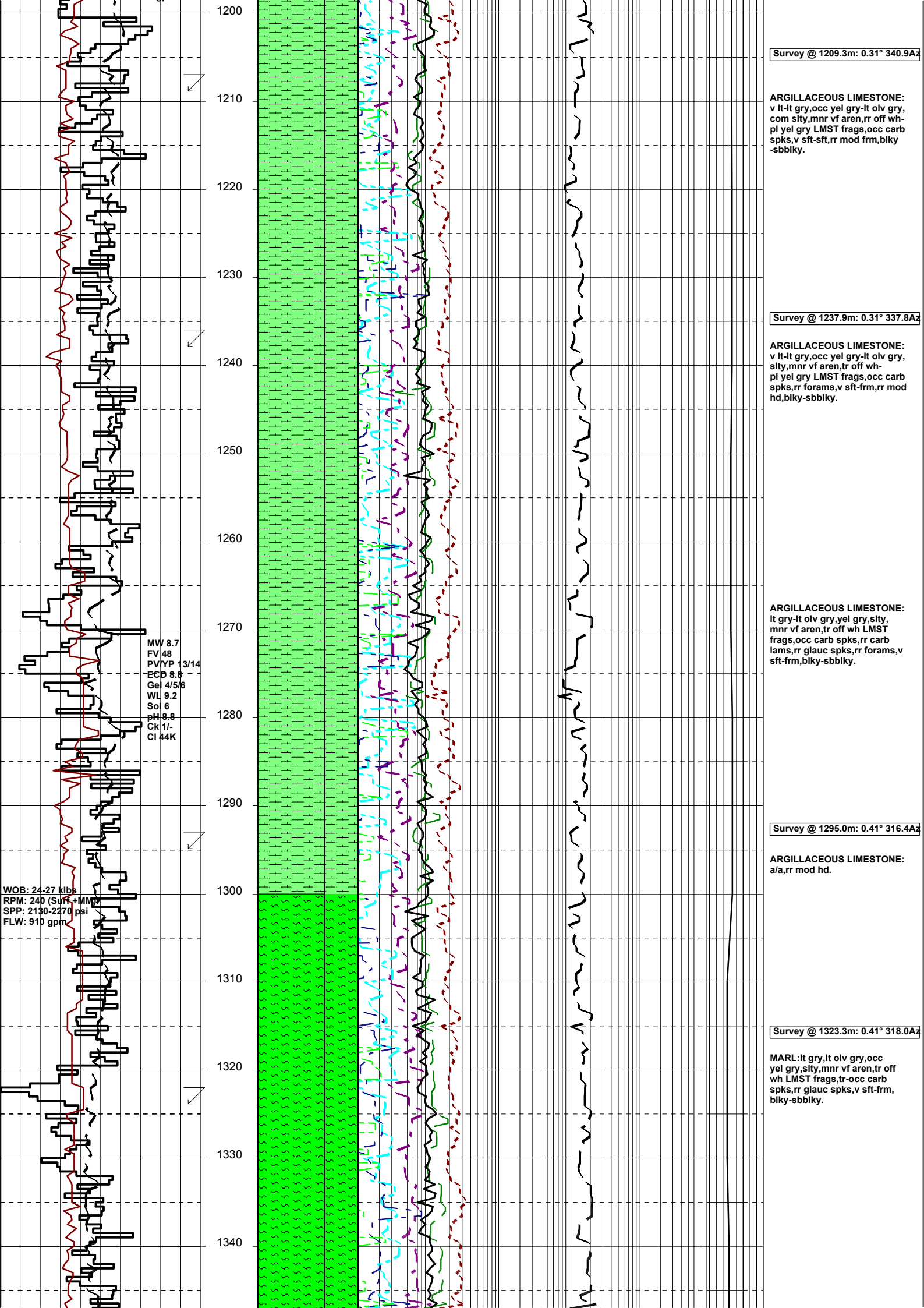
Survey @ 1180.5m: 0.25° 318.6Az

ARGILLACEOUS LIMESTONE:
v lt-lt gry,occ yel gry-lt olv gry,com slty,mnr vf aren,mod com carb spks,rr forams,v sft-sft,rr mod frm,blky-sbbiky.

ARGILLACEOUS LIMESTONE:
gen a/a,rr pyr foss.

WOB: 15-21 klbs
RPM: 240 (Surf +MM)
SPP: 1880-2090 psi
FLW: 928 gpm

WOB: 21-25 klbs
RPM: 235-245 (Surf +MM)
SPP: 2060-2200 psi
FLW: 910-920 gpm



Survey @ 1209.3m: 0.31° 340.9Az

ARGILLACEOUS LIMESTONE:
 v lt-lt gry, occ yel gry-lt olv gry,
 com slty, mnr vf aren, rr off wh-
 pl yel gry LMST frags, occ carb
 spks, v sft-sft, rr mod frm, blk
 -sbbkly.

Survey @ 1237.9m: 0.31° 337.8Az

ARGILLACEOUS LIMESTONE:
 v lt-lt gry, occ yel gry-lt olv gry,
 slty, mnr vf aren, tr off wh-
 pl yel gry LMST frags, occ carb
 spks, rr forams, v sft-frm, rr mod
 hd, blk-sbbkly.

MW 8.7
 FV 48
 PV/YP 13/14
 ECD 8.8
 Gel 4/5/6
 WL 9.2
 Sol 6
 pH 8.8
 CK 1/-
 CI 44K

Survey @ 1295.0m: 0.41° 316.4Az

ARGILLACEOUS LIMESTONE:
 a/a, rr mod hd.

WOB: 24-27 klbs
 RPM: 240 (Surf + MM)
 SPP: 2130-2270 psi
 FLW: 910 gpm

Survey @ 1323.3m: 0.41° 318.0Az

MARL: lt gry, lt olv gry, occ
 yel gry, slty, mnr vf aren, tr off
 wh LMST frags, tr-occ carb
 spks, rr glauc spks, v sft-frm,
 blk-sbbkly.

Survey @ 1351.8m: 0.50° 308.2Az

MARL:lt gry,lt olv gry,occ yel gry,slty,mnr vf aren,tr off wh LMST frags,tr-occ carb spks,tr glauc spks,rr forams,rr pyr foss,sft-frm,blky-sbbiky.

Survey @ 1380.3m: 0.45° 323.7Az

MARL:lt gry,lt olv gry,yel gry,slty,vf aren i/p,tr-occ carb spks,tr glauc spks,sft-frm, sbbiky-blky.

CALCARENITE:lt yel brn,vf grad to aren MARL,pr srt,sa-sr,wk-mod cal abdt brn slty mtx,fri-occ mod hd,v vis por,no fluor.

Survey @ 1408.9m: 0.56° 313.7Az

ARGILLACEOUS LIMESTONE: yel gry,lt olv gry,gry,slty,vf aren i/p,occ carb spks,rr glauc spks, v sft-frm,sbbiky-blky,amorph.

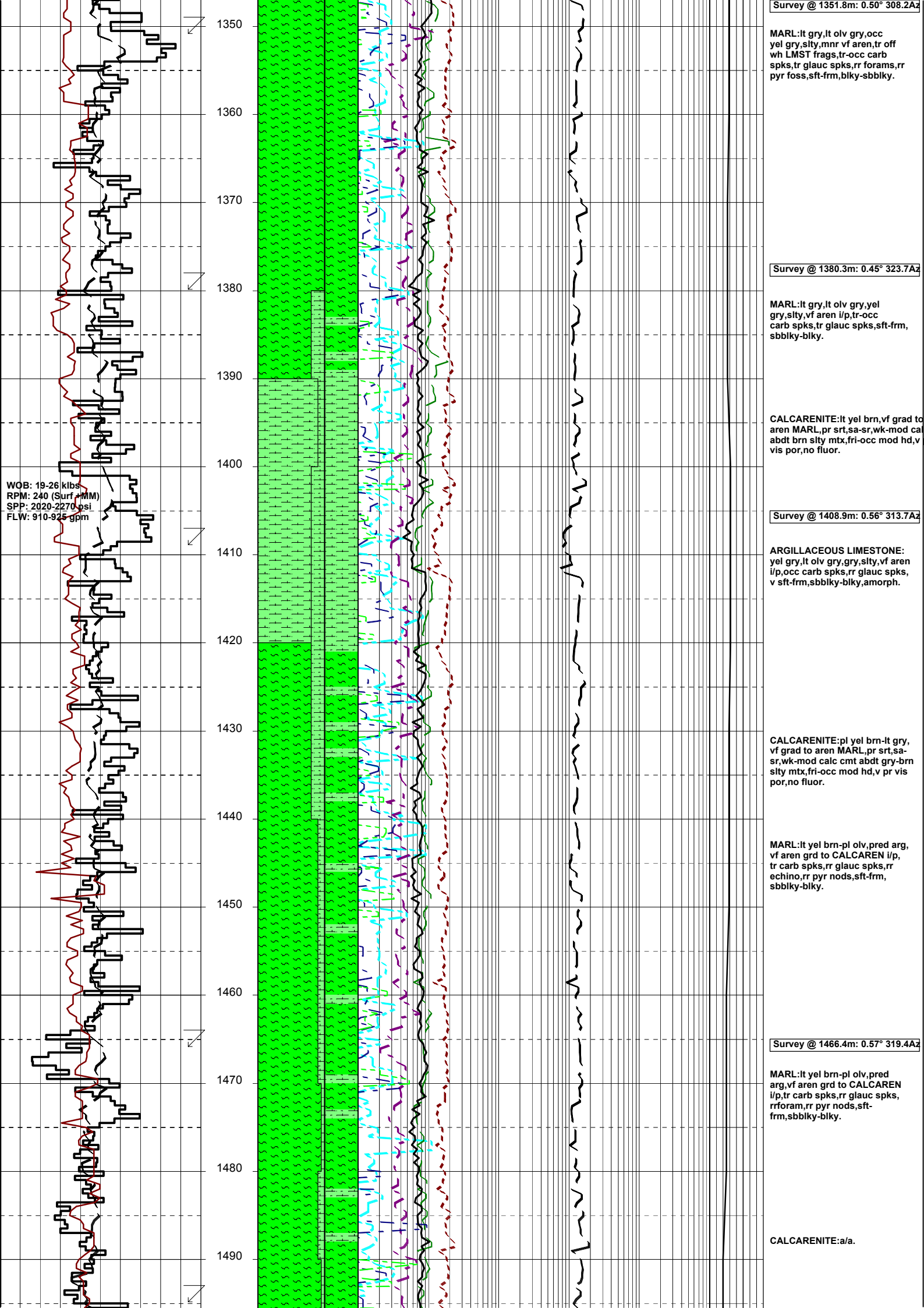
CALCARENITE:pl yel brn-lt gry, vf grad to aren MARL,pr srt,sa-sr,wk-mod calc cmt abdt gry-brn slty mtx,fri-occ mod hd,v pr vis por,no fluor.

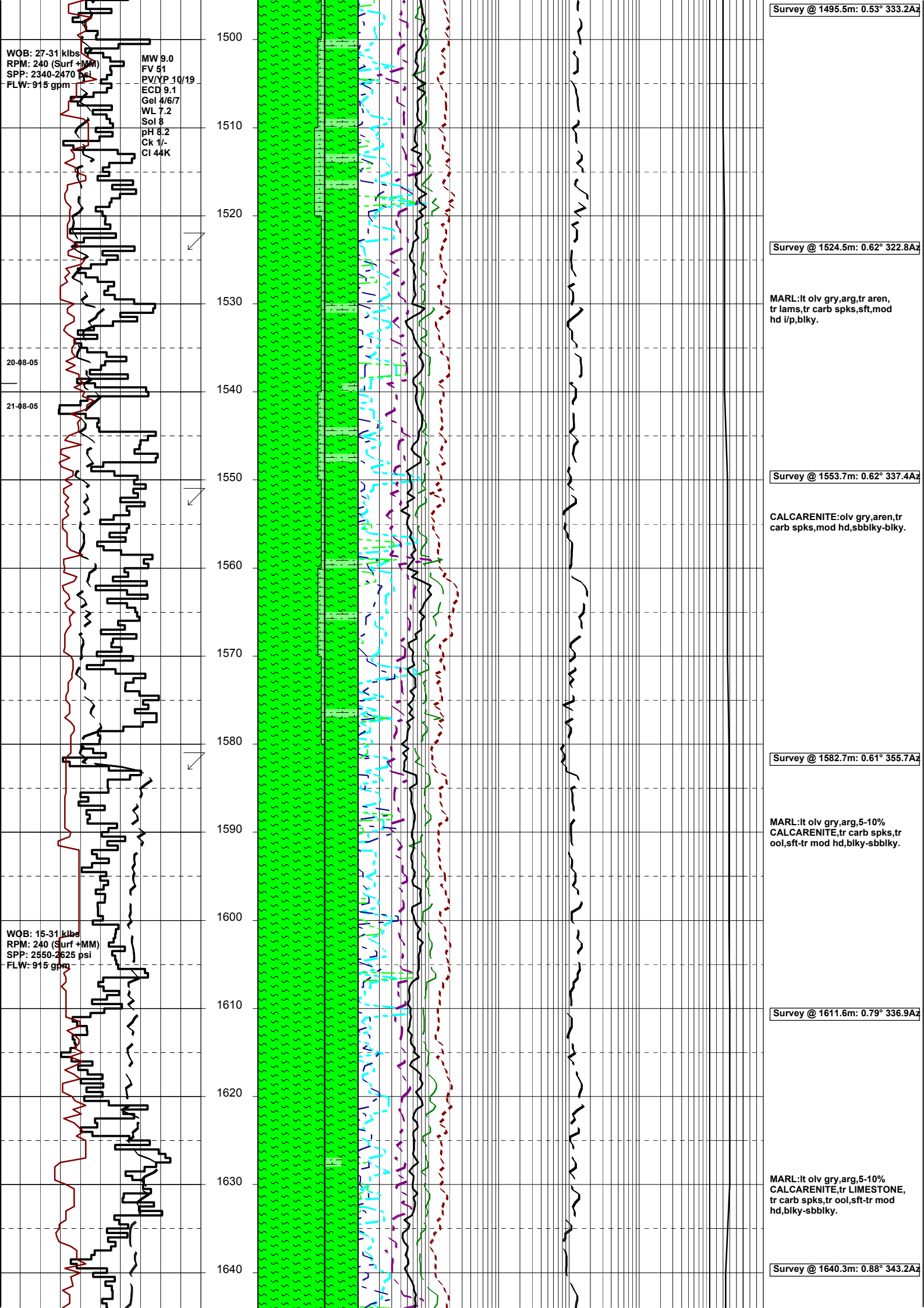
MARL:lt yel brn-pl olv,pred arg, vf aren grd to CALCAREN i/p, tr carb spks,rr glauc spks,rr echino,rr pyr nods,sft-frm, sbbiky-blky.

Survey @ 1466.4m: 0.57° 319.4Az

MARL:lt yel brn-pl olv,pred arg,vf aren grd to CALCAREN i/p, tr carb spks,rr glauc spks, rrforam,rr pyr nods,sft-frm,sbbiky-blky.

CALCARENITE:a/a.





WOB: 27-31 klbs
 RPM: 240 (Surf +MM)
 SPP: 2340-2470 psi
 FLW: 915 gpm

MW 9.0
 FV 51
 PV/YP 10/19
 ECD 9.1
 Gel 4/6/7
 WL 7.2
 Sol 8
 pH 8.2
 Ck 1/-
 CI 44K

20-08-05

21-08-05

WOB: 15-31 klbs
 RPM: 240 (Surf +MM)
 SPP: 2550-2625 psi
 FLW: 915 gpm

Survey @ 1495.5m: 0.53° 333.2Az

Survey @ 1524.5m: 0.62° 322.8Az

MARL:lt olv gry,arg, tr aren,
 tr lams, tr carb spks, sft, mod
 hd i/p, blkly.

Survey @ 1553.7m: 0.62° 337.4Az

CALCARENITE: olv gry, aren, tr
 carb spks, mod hd, sbbkly-blky.

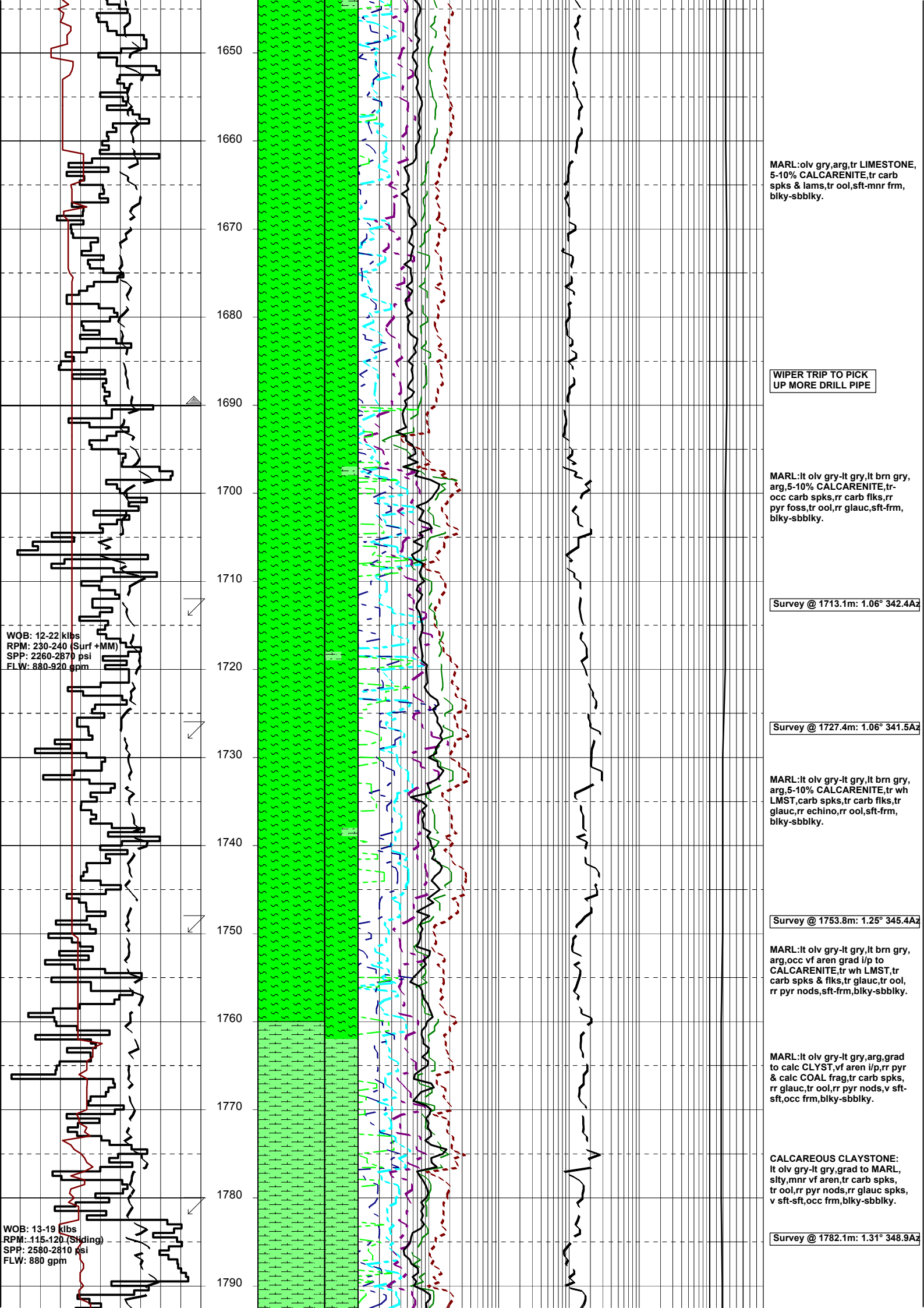
Survey @ 1582.7m: 0.61° 355.7Az

MARL:lt olv gry, arg, 5-10%
 CALCARENITE, tr carb spks, tr
 ool, sft-tr mod hd, blkly-sbbkly.

Survey @ 1611.6m: 0.79° 336.9Az

MARL:lt olv gry, arg, 5-10%
 CALCARENITE, tr LIMESTONE,
 tr carb spks, tr ool, sft-tr mod
 hd, blkly-sbbkly.

Survey @ 1640.3m: 0.88° 343.2Az



1650
1660
1670
1680
1690
1700
1710
1720
1730
1740
1750
1760
1770
1780
1790

MARL: olv gry, arg, tr LIMESTONE,
5-10% CALCARENITE, tr carb
spks & lams, tr ool, sft-mnr frm,
blky-sbbiky.

WIPER TRIP TO PICK
UP MORE DRILL PIPE

MARL: it olv gry-lt gry, lt brn gry,
arg, 5-10% CALCARENITE, tr-
occ carb spks, rr carb flks, rr
pyr foss, tr ool, rr glauc, sft-frm,
blky-sbbiky.

Survey @ 1713.1m: 1.06° 342.4Az

Survey @ 1727.4m: 1.06° 341.5Az

MARL: it olv gry-lt gry, lt brn gry,
arg, 5-10% CALCARENITE, tr wh
LMST, carb spks, tr carb flks, tr
glauc, rr echino, rr ool, sft-frm,
blky-sbbiky.

Survey @ 1753.8m: 1.25° 345.4Az

MARL: it olv gry-lt gry, lt brn gry,
arg, occ vf aren grad i/p to
CALCARENITE, tr wh LMST, tr
carb spks & flks, tr glauc, tr ool,
rr pyr nods, sft-frm, blky-sbbiky.

MARL: it olv gry-lt gry, arg, grad
to calc CLYST, vf aren i/p, rr pyr
& calc COAL frag, tr carb spks,
rr glauc, tr ool, rr pyr nods, v sft-
sft, occ frm, blky-sbbiky.

CALCAREOUS CLAYSTONE:
lt olv gry-lt gry, grad to MARL,
sfty, mnr vf aren, tr carb spks,
tr ool, rr pyr nods, rr glauc spks,
v sft-sft, occ frm, blky-sbbiky.

Survey @ 1782.1m: 1.31° 348.9Az

WOB: 12-22 klbs
RPM: 230-240 (Surf +MM)
SPP: 2260-2870 psi
FLW: 880-920 gpm

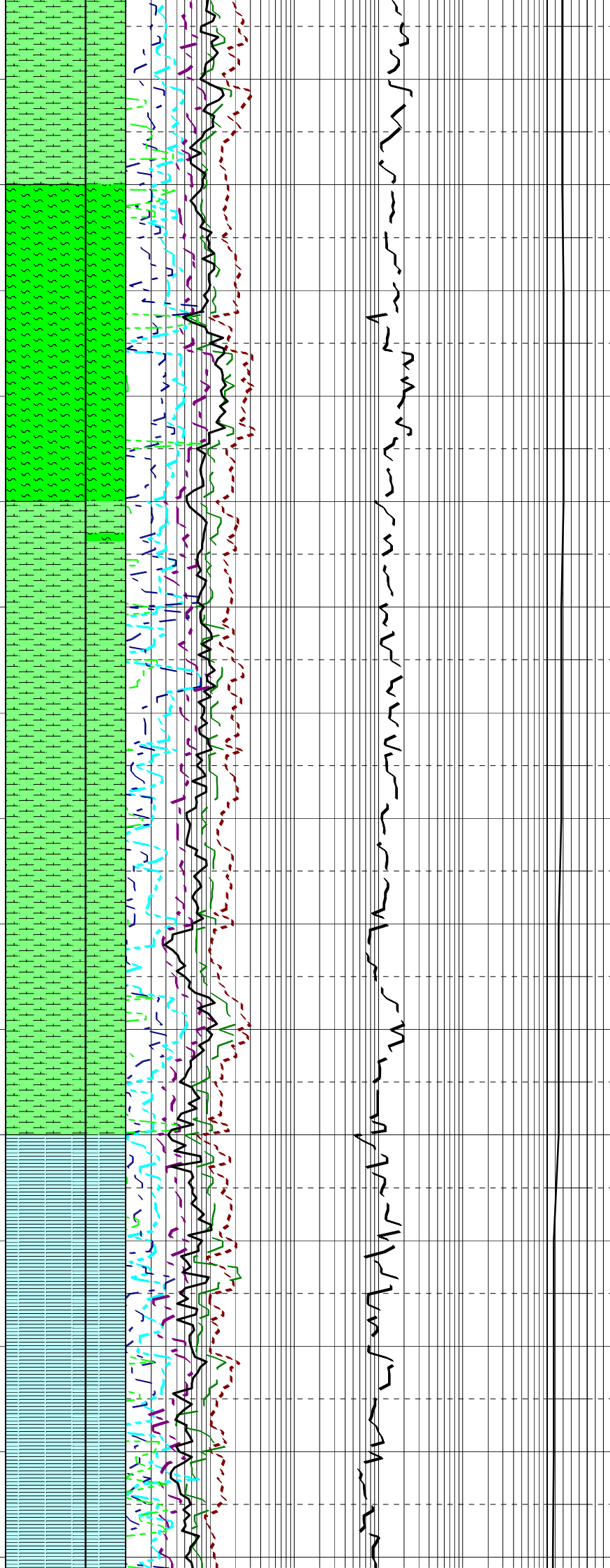
WOB: 13-19 klbs
RPM: 115-120 (Sliding)
SPP: 2580-2810 psi
FLW: 880 gpm

WOB: 17-20 klbs
RPM: 225-235 (Surf + MM)
SPP: 2260-2870 psi
FLW: 880-920 gpm

WOB: 17-20 klbs
RPM: 225-235 (Surf + MM)
SPP: 2850-3190 psi
FLW: 860-930 gpm

SLIDING:
1929m-1939m

1800
1810
1820
1830
1840
1850
1860
1870
1880
1890
1900
1910
1920
1930
1940



CALCAREOUS CLAYSTONE:
med lt gry-lt olv gry,slty,mnr vf aren,rr carb spks,rr ool,v sft-sft,occ frm,blky-sbblky.

Survey @ 1810.7m: 1.32° 347.3Az

MARL:med lt gry-lt olv gry,slty,mnr vf aren,rr carb spks,rr ool,rr pyr lam,v sft-sft,occ frm,blky-sbblky.

Survey @ 1839.5m: 1.17° 347.3Az

MARL:med lt gry-lt olv gry,slty,mnr vf aren,tr wh LMST frags,rr carb spks,rr carb spks,rr ool,rr pyr nods,v sft-sft,occ frm,blky-sbblky.

CALCARENOUS CLAYSTONE:
med gry,arg,slty i/p,tr vf aren,tr calcite,tr dissem pyr,tr carb spks & lams,rr ool,sft-frm,blky-sbblky.

Survey @ 1897.6m: 1.53° 346.9Az

CALCARENOUS CLAYSTONE:
med gry,arg,slty i/p,tr vf aren,tr calcite,tr dissem pyr,tr carb spks & lams,rr ool,tr foss,sft-frm,blky-sbblky.

Survey @ 1926.7m: 1.67° 346.2Az

